



Waukegan Harbor Citizens Advisory Group

55 Harbor Place – P.O. Box 297
Waukegan, Illinois 60079
Phone 847-244-3133 Fax 847-244-1348
<http://waukeganharborcag.com>

Minutes of the September 15th, 2016, CAG meeting held at Lilac Cottage, Waukegan Park District, Waukegan respectfully submitted by Penny Bouchard and Charlie Hoffman, acting as Recording Secretary of the Waukegan Harbor Citizens' Advisory Group.

The September 2016, meeting of the Waukegan Harbor Citizens Advisory Group was called to order at 6:00 pm by Chair Susie Schreiber.

The Chair welcomed those in attendance and asked everyone to identify themselves and any group that they represent.

Attendance at the September 15th, 2016 CAG Meeting:

Penny Bouchard	Concerned Citizen
Mary Ross Cunningham	Lake County Board – 9th
Claudia Freeman	Waukegan Park District
Paul Geiselhart	Lake County Audubon
Charlie Hoffmann	Lake Forest Open Lands & Concerned Citizen
Heriberto Leon	USEPA
Lauren Luebker	AKZO Nobel Aerospace Coatings
Paul Kakuris	Concerned Citizen
Mike Prusila	Lake County Stormwater Management
Susie Schreiber	Waukegan Harbor CAG, Illinois Audubon
Chris Tanner	Tanner Environmental Company

GUESTS:

Tara Gloystein	Lake Forest College
-----------------------	---------------------

AGENDA

ARAV Institute intern.
Eco Ambassador.

MINUTES

July minutes have been delivered and are under review.

UPDATES

USEPA – Heriberto León – leon.heriberto@epa.gov

Johns Manville Superfund Site

www.epa.gov/superfund/johns-manville

CERCLA Activities:

The Operable Unit 8, Site 6 soil removal action for the north and south shoulders of Greenwood Avenue continue and the Operable Unit 3, Site 3 soil removal action are in progress. Activities will continue for the next 3 weeks, or longer. Site 3 and 6 removal action materials are being hauled to the on-site consolidation area (Black Ditch Area), labeled “On-site Debris Consolidation Area” on the site map. The clean backfill being used along Greenwood is sand from an offsite quarry.



Illinois State Remediation Program (SRP) Activities:

Plans are being developed with IEPA and IDNR for SRP engineered barrier completion to accommodate Piping Plover habitat in the area that was used by the birds this year. Clean clay is being imported from offsite for use in SRP engineered barrier construction. The barrier is to protect the Piping Plover from predators such as the peregrine falcons, not people.

Other Site Issues:

The arsenic groundwater monitoring data report dated Aug. 31, 2016 is being reviewed by USEPA. A truck / vehicle cleaning facility has been constructed to prevent soils or materials from being tracked off-site.

North Shore Gas (NSG)

North Plant

www.epa.gov/superfund/northshore-gas-north

Remedial Investigation work plan is being revised.

USEPA and NSG are continuing to finalize revisions to the existing Remedial Investigation (RI) work plan to allow for expanded sampling to the north, east, and south of the site, based on USEPA's review of the existing data collected by the gas company so far. Once approved, NSG will proceed with additional field sampling in accordance with the revised work plan. Such work is expected to be completed within a year. A draft RI report will be submitted to USEPA once this additional field investigation has been completed.

South Plant

www.epa.gov/superfund/northshore-gas-south

Additional field investigations needed to complete the Remedial Design.

Additional data collection for design of the DNAPL remedy is ongoing. Last month, soil borings were taken in the area, which as expected, indicated the presence of MGP residuals in subsurface soil (approximately 6 feet below ground). Later this month, USEPA will oversee the gas company's additional groundwater sampling at the site.

Note: The Record of Decision (ROD) for this site was approved by USEPA last year.

Outboard Marine Corp. site

www.epa.gov/superfund/outboard-marine-corp

Remediation work continues throughout the site area.

- The Old Die Cast (ODC) Cell work should be complete by the end of September.
- The North Ditch Bank work has begun to cap the residual contaminated soil on the north and south banks of the North Ditch and is expected to continue into November.
- East Waterway – The dredging work is completed. Restoration and seeding of the banks of the East Waterway has begun using the previously Waukegan Harbor CAG-approved seed mix. USEPA hopes to complete work on the East Waterway this fall. Work will include some sediment excavation in the northern portion of the waterway and soil excavation in the south bank area just east of the East Containment Cell where the stream meandered.

Mike Prusila noted that he thought that the North Shore Water Reclamation District Waukegan plant had discharged to the alternate North Ditch discharge location during the summer at the time of required repairs to the normal outfall pipe that discharges to the Des Plaines River at the Rt. 41 crossing. Penny Bouchard noted that the District has a NPDES permit modification for repair work that requires phosphorus treatment when the alternative discharge location to Lake Michigan is used. The discharge flow is approximately 15-20 MGD.

Additional comment: Extensive invasive phragmites have grown on the Plant 2 site. Tim Drexler, USEPA, the Chicago Botanic Gardens and Deb Maurer from Lake County Forest Preserve strike team have been discussing future control of the invasives.

Yeoman Creek Landfill site

www.epa.gov/superfund/yeoman-creek-landfill

Current Remediation Activities:

The Yeoman Creek Remedial Group's (YCRG's) contractor has started the remedial action at a portion of the Terrace Nursing Home parking lot this week. This project is the Phase 2 Additional Protective Measures remediation work from the planning conducted for the last few months. The initial tasks include a safety kick-off meeting, mobilization of workers, staging of equipment and supplies, and construction of the temporary parking (on the Lovinger property). The entire project is anticipated to be completed within a month. The permeable parking area will allow the methane gas to reach the surface, be collected and removed.

In response to a request, the YCRG workgroup includes:

1. *Browning Ferris Industries of Illinois, Inc.*
2. *City of Waukegan, Illinois*
3. *Outboard Marine Corp.*
4. *Waukegan Community School District No. 60*
5. *Goodyear Tire & Rubber Company*
6. *Dexter-Midland Corporation*

IEPA

IEPA continues to work with JM on the site remediation.

IDNR

No updates were presented at this meeting.

City of Waukegan

No updates were presented at this meeting.

CAG BUSINESS

Salmon Unlimited Kids Fishing Derby

The fishing derby held last Saturday down at the Waukegan Harbor was a huge success. There were 112 kids registered by 10 am. The kids received free T-shirts, and prizes for certain sized catch. The event was clearly multi-generational and included both grandparents as well as parents. At least two large salmon were caught and lots of other fish. The Lake County Nature Network helped publicize the event.

Bowen Park Triangle Area

The Triangle acquisition that was gifted to the Waukegan Park District was the result of the Illinois Audubon Society and several other government agencies. The partners helped with access and drainage problems. Tom Chefalo championed the review of the culvert under Sheridan Road which is dangerous. IDOT has approved culvert repair under Sheridan Road in the 2017 budget. This project will help the Bowen neighbors, Glen Flora Country Club and the Waukegan Park District with the restoration of the number 2 ranked ravine in Illinois.

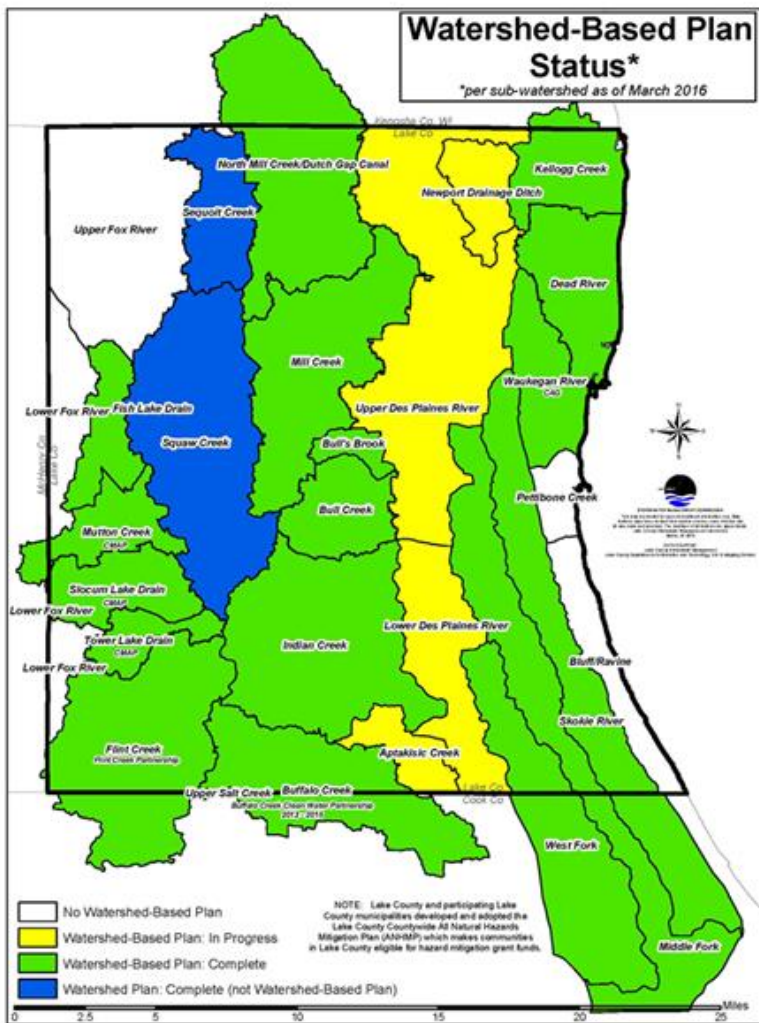
It was also noted that culvert repair is scheduled on State Rt. 120 -Belvidere Rd. between Roosevelt Park and Cooke Magnet School.

US Fish & Wildlife

Louise Clenency from USFW, Chicago Field Office received an August site tour of the Waukegan Harbor AOC and Extended AOC, plus the GLRI work areas. Sonny Cohan from Illinois Audubon and Chris and Paul Geiselhart from Lake/Cook Audubon (National Audubon) also attended. Louise was very pleased with the work done to date related to Bowen Park’s restoration, especially as USF&W had given initial startup funds to begin this effort.

It was suggested that Bowen Park should be used as a natural areas study site in the future for Masters level research projects at area universities. They loved the studies completed under the GLRI grant and previous grants, the improvements to the Frog Pond and the better access paths pavilion. The work completed gives Bowen a strong position for future grants.

Scoping a Lake Michigan Watershed Plan in Lake County – Mike Prusila, Lake County Stormwater Mgt.



The Lake Michigan Watershed Plan scoping project was developed to define holes in the Lake County stormwater, water quality and water issues data.

Mike noted that water does not follow political boundaries.

The plan was to identify policy projects and programs for potential funding. These include:

- Great Lakes water quality issues,
- Beach impairments,
- Ravine erosion issues,
- Bluff failures, and
- Stormwater concerns.

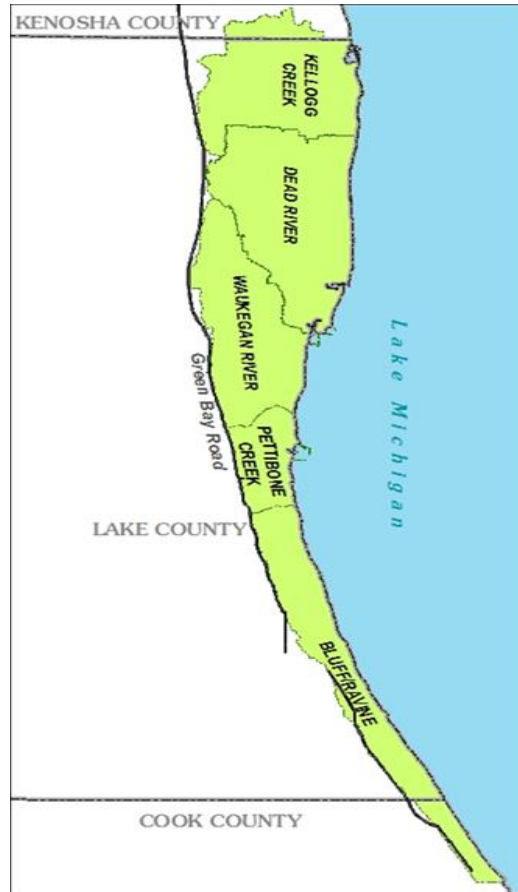
They want to involve more people in this process.

Lake County still needs watershed plans for Pettibone Creek and another small ravine. They need updates to the Kellogg Creek/Dead River, and Waukegan River plans. There are nine elements required for a plan.

SMC is the lead and has talked to IDNR Coastal Zone and IEPA. There will be 12-20 meetings over a two year period. Priorities will be defined in 2018.

If they were to conduct individual plan updates, the cost would be approximately \$410,000. They think a combined effort could be achieved for \$250,000.

Interpretation of the criteria has become more defined than when the early plans were completed. At this point, all of these plans need updating. While municipalities are the chief stakeholders, there are other smaller partners that could take advantage of watershed management board grants or county level grants. This project will help identify those opportunities.



GLRI Grant – Bowen Park DRAFT summary overview for final report

The GLRI grant was for a total of \$1.43 million dollars. The Bowen Park share was nearly \$500,000. Of the 61 acres, 31 acres were an “ickity thicket”. The park contains a lot great deal of ecological diversity, and includes the Glen Flora Ravine which is ranked the second highest quality ravine (out of 47) flowing into Lake Michigan. The following were identified:

- Floristic data collection conducted by the late Margo Milde – Bowen Park achieved an excellent Floristic Quality Index (FQI) index of over 70.
- Avian studies were conducted by Ed Collins. There are 31 breeding species and 37 migratory species in the study areas. Ed also suggested the JM site would make an excellent grassland bird site as so many of the state’s grassland birds are actively using and breeding on the site even during construction and restoration.
- Blandings turtles – Future monitoring by Gary Golacki, LCFP Wildlife biologist is suggested.
- Frog Pond Boardwalk – Installation complete in late fall 2017.

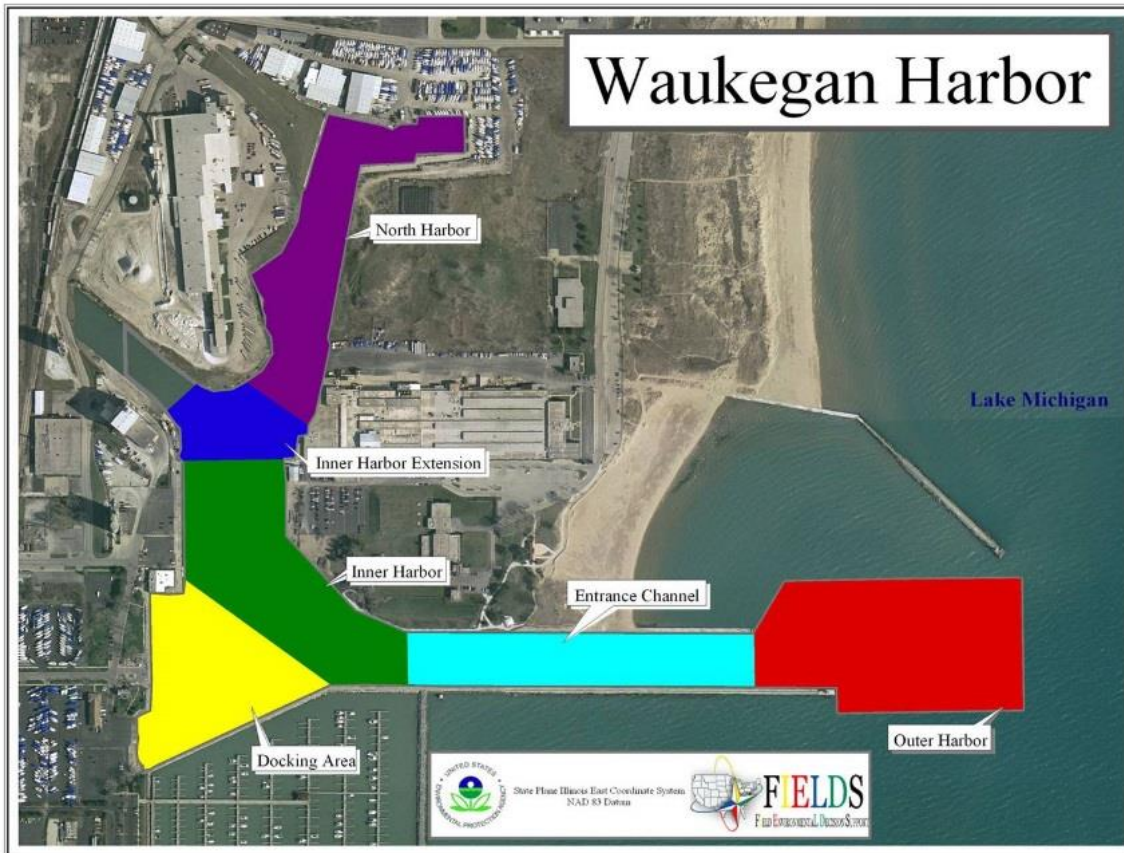
The project Executive Summary is expected to be approximately eight (8) pages. Recommendations will be forthcoming.

Chicago Botanic Garden *Plants of Concern (POC) Program* - Future work efforts in Bowen Park and the full Waukegan Dunal Area along the lakeshore.

The POC has stated it wants to continue the floristic monitoring. They are enthusiastic about the Eco-Ambassador’s work. CBG is working, with permission from the City of Waukegan, to collect seed on the Waukegan Dunal Area. They hope to get permission to do an updated inventory.

Federal Channel – North Seawall Repair – USACE

The repair is on the north side of the entrance channel. USACE is in the permit issuance stage with IEPA. They have received funding, but need to obtain the IEPA permit for the work soon so that they do not lose the funding. They will present the repair plan at the October CAG meeting.



Handicapped Canoe/Kayak Launch at Waukegan Port District – Public comment is being sought by IDNR for the plan. The notice was posted August 22 and comments will be received through September 13th. The launch will go in as a demonstration. The launch can be taken in and out manually. Currently Illinois is the only state with no stop-over areas for kayaks and canoes. This handicap launch is the only such launch in IL, and only the second on the Lake Michigan. There is one in Indiana.

Near Shore Data Collection – update

The CAG continues to work with Limnotech along with several Waukegan Harbor CAG members, including the Waukegan Port District, to define near shore sand movement. We are also working with Indiana/Illinois Sea Grant.

Birding Lake County

Hawkfest will be held at Lake Forest College on October 14-16th with Jeffrey Sundberg. This is the largest flyover event of the year which can be seen fairly easily. We will check to see if we can see ~~more~~ hawks in Bowen.

Update Waukegan AOC and Extended AOC site tours

Tours have been received by USF&W and the ARAVA Institute. We try to accommodate requests.

Great Lakes Public Forum – Status of the Great Lakes

The International Joint Commission (IJC) invites your views October 4-7, 2016 in Toronto, Canada. They meeting was held in Chicago last year. Since the closing out of the quarterly Lake Michigan Forum meetings recently, this is now the only public meeting where the general public is encouraged to provide input into Great Lakes, and specifically in our case Lake Michigan, issues/concerns.

Great Lakes Beach Association Conference – Marquette, Michigan – October 4-7, 2016

Old Business

Chicago Botanic Garden – Green Youth Farm – Organic vegetables available Wednesdays through October 12th. Produce is organic and tastes wonderful.

Waukegan Lakefront Active Implementation Plan – Edgewater Resources has reports on its work to date that have been released to the larger community for review and comment.

New Business

ARAVA Institute

Dold's office requested a one day tour for two interns that were here for 6 weeks. In addition to the Waukegan Harbor AOC and Extended AOC tour, they also were hosted by Fred Veenbass at Midwest Generation - NRG.

Announcements

None

Adjournment

Chris Tanner made a motion to adjourn the meeting; the motion was seconded by Mike Prusila. The meeting was adjourned by voice vote.

Web Sites

<http://www.waukeganharborcag.org>

The Waukegan CAG website.

<http://www.epa.state.il.us/environmental-justice>

Illinois EPA – Environmental Justice website.

<http://www.ilenviro.org>

Good listing of all environmental bills in the ILL House & Senate.

<http://www.glc.org>

Great Lakes Commission.

<http://www.binational.net>

Great Lakes Binational Toxics Strategy – 2002 Annual Progress Report

<http://www.lkmichiganforum.org/>

The Lake Michigan Forum

<http://www.epa.gov/glnpo/lakemich>

Lake Michigan Lake Wide Management Plan (LaMP 2000)

<http://wi.water.usgs.gov/lmmcc/index.html>

Lake Michigan Monitoring Coordinating Council

<http://www.epa.gov/lakemich>

Lake Michigan Sensitive Areas

<http://www.cciw.solec>

State of the Great Lakes – SOLEC 2002 full report.

<http://www.epa.gov/glnpo/solec>

Annis Water Resources Institute

<http://www.gvsu.edu/wri>

<http://www.epa.gov/OST/GLI/glimixqa.html>

A document on Bioaccumulative Chemicals of Concern (BCCs).

<http://www.glerl.noaa.gov/pubs/brochures/wlevels/wlevels.html>

Great Lakes Water Levels

<http://www.sph.umich.edu/ehs/umaql/mass.html>

Lake Michigan Mass Balance Study

<http://www.epa.gov/glnpo/lmmb>

Lake Michigan Mass Balance

<http://biology.usgs.gov/S+t/noframe/x186.html>

Zebra Mussels in Southwestern Lake Michigan

CAG Members

Abbott Laboratories

Akzo Nobel

Alliance for the Great Lakes

Bombardier Recreational Products

Carol Dorge, Attorney

City of North Chicago

City of Waukegan

College of Lake County

Commonwealth Edison

EJ & E Railway

Great Lakes Sport Fishing Council

Illinois Audubon Society

Johns Manville

LaFarge Corporation

Lake County Audubon

Lake County Chamber of Commerce

Lake County Planning, Building and Development Dept.

Lake County Health Department

Lake County Stormwater Management Agency

Larsen Marine, Inc.

LFR Levine • Fricke

Liberty Prairie Conservancy

Midwest Generation

National Gypsum

North Shore Gas

North Shore Sanitary District

Outboard Marine Corporation

Salmon Unlimited

CAG Members (continued)

Waukegan Charter Boat Association

Waukegan Main Street

Waukegan Lakefront Development Corporation

Waukegan Park District

Waukegan Port District

Waukegan Yacht Club

Concerned Citizens

CAG Associates

Chicago Metropolitan Agency for Planning

Delta Institute

Illinois Citizen Action

Illinois Depart. of Natural Resources

Illinois Environ. Protection Agency

Illinois-Indiana Sea Grant

Illinois Lake Management Association

Illinois Pollution Control Board

International Joint Commission

Maritime Administration

U.S. Army Corps of Engineers

U.S. Environ. Protection Agency

U. S. Fish and Wildlife

University of Illinois- Marine Extension

Waukegan Public Library

Concerned Citizens